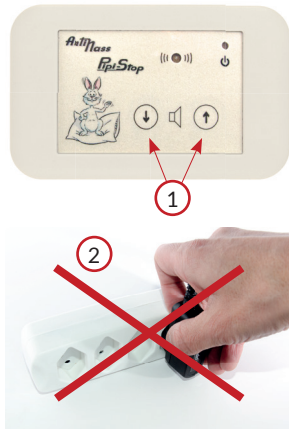
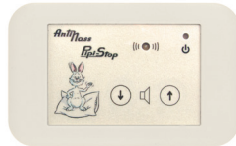


Adjusting the volume

Increase the volume: press the button (↑) and hold until you reach the desired loudness

Decrease the volume: press the button (↓) and hold until you reach the desired loudness

To activate the **silent mode**, press both volume buttons at the same time.
To deactivate, simply press one of the two buttons.



After nighttime urination

To stop the alarm:

1. **Disconnect the transmitter from the urine detector**

*If the alarm was longer than **3 minutes**, press briefly one of the two volume buttons on the receiver to stop the alarm*

2. Do **not disconnect the power cable** to stop the alarm

Cleaning the Urine Detector and Transmitter:

1. Remove the transmitter from the urine detector
2. Wash the urine detector and transmitter under lukewarm water
3. Gently dry the detector and transmitter **DO NOT RUB THE DETECTOR!**



Melebi SA

Parkweg 12
2502 Biel/Bienne
phone 032 751 27 95
fax 032 751 27 82

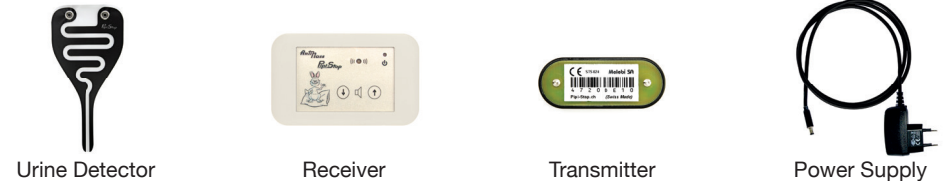
email: info@melebi.ch
www.pipi-stop.ch



May 2021 version

Pipi-Stop Instruction Manual

Components of the Pipi-Stop® warning device

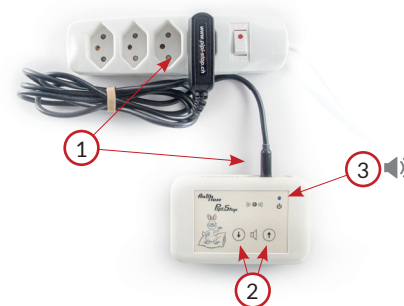


TESTING THE SYSTEM

To view test videos: www.pipi-stop.ch/en/pipi-stop-therapy/instruction-for-use/

Testing the receiver:

1. Connect the power supply to a power outlet (230V) and connect to the back of the receiver
2. Briefly press **one of the 2 volume control buttons**
3. **Test result point 1 and 2:**
blue light on + sound



Testing the transmitter:

1. Bridge (connect) the 2 metal studs with a small metal spoon
2. **Test result:**
flashing white light
+ sound





Testing the complete system:

①

1. Attach the transmitter to the detector (*the detector must be unpacked*)
2. Bridge the tongue with a spoon
3. **Test result:** flashing white light + sound



Preparing the transmitter and the urine detector

Attach the transmitter to the urine detector
(*the polarity direction does not matter*)



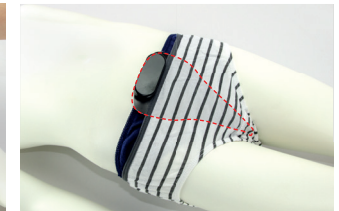
①



②



③



Ideally, place the detector and transmitter between 2 pairs of underwear. This helps avoid false alarms due to perspiration and makes it easier to attach the elements.

Place the urine detector with the transmitter between the 2 pairs of underwear, on the child's belly (*transmitter facing outwards*), with the tongue between the legs.

The urine detector should not be folded in two, but it is normal for it to follow the curve of the body.

Important!

Testing with water will not set off the alarm!

If the alarm does not go off: make sure that the receiver and transmitter are in close proximity. If the Pipi-Stop does not work after these checks, **please contact us immediately.**

Safety / Maintenance

The receiver and power supply must NEVER come into contact with water (danger of electric shock!)

The transmitter must NEVER be opened. The battery can only be changed by Melebi SA for watertightness purposes.

Use **ONLY** our 12V power supply with our receiver to avoid overvoltage!

Any necessary repairs are carried out **exclusively** by Melebi SA.

Preparing the receiver

Connect the power supply to the back of the receiver and connect to a 230-volt outlet
(*blue indicator light comes on + beep tone*)

Place the receiver on the child's bedside table

